

Wili  
**beholelisboa**  
The place to be ★★★★★

## A NEW BOUTIQUE HOTEL IN THE HEART OF THE POMBALINE LOWER TOWN

There is a new boutique hotel in the heart of the Pombaline Lower Town. It is called **behotelisboa** and occupies number 136 rua dos Correeiros, between rua August and rua da Prata.



**Behotelisboa** is a four-star hotel located in the Pombaline Lower Town that stands out from the crowd with its intimate atmosphere, personalised welcome, comfort and central location. It is just five minutes walk from some of the most emblematic tourist attractions of the capital, such as Castle of St George, the Cathedral, the Praça (square) do Comércio, and those of Rossio and Chiado.

**Behotelisboa** boasts 39 rooms spread over five floors, with areas between 14m<sup>2</sup> and 29m<sup>2</sup>. The rooms are organised in five categories: 1 Mini Interior View, 5 Standard Interior View, 16 Standard City View, 5 Mansard, 8 Superior and 4 Premium.

Located on the corner of rua dos Correeiros and rua da Assunção, **behotelisboa** is served by a range of public transport that links the Lower Town to the main places of interest in the capital.

Besides the metro, accessible from the Rossio, da Baixa/Chiado and Terreiro do Paço stations, and the suburban train lines, at the Rossio (Sintra line) and Cais do Sodre (Cascais) stations, the hotel has countless bus lines nearby, plus the 28 tram line that runs through Old Lisbon, and the 15 tram line that runs along the waterfront and serves the Belém monumental area.

Open since 15 September 2015, **behotelisboa** is especially devoted to welcoming foreign visitors who come to discover the city at their leisure.

## A NEW PLAYER IN LISBON HOSPITALITY

**Behotelisboa** marks the début of the Ferreira group in the hospitality sector, following on from its established experience in the restaurant business, which has included the successful restoration of some of the most iconic spaces in the centre of Lisbon, like Café Gelo and Café Nicola.

The family business group saw the opportunity in the boutique hotel segment that it was looking for to expand and diversify its operations.

Manuel Ferreira, Vicente Ferreira, Filipe Ferreira and Jorge Ferreira were in charge of managing the construction and launch of **behotelisboa**; Nara Ferreira, Nídia Ferreira and Filipe Ferreira are in charge of directing the operation.

## THE RESTORATION PROJECT



The restoration of the two five-storey buildings that house **behotelisboa** has followed the project designed by the Arquitépago architecture studio and the Portugal Urban Planning studio that sought to preserve the authenticity of the eighteenth century urban ensemble by keeping the original volume and architectural vocabulary, marked by its simplicity, its decorative clarity and metric rigour characteristic of the enlightenment period.

Respect for the original structure and construction processes was the main determinant for the rehabilitation project. The existing structural solution, in which resides one of the Pombaline buildings' greatest values, has been preserved and adapted to the needs of contemporary use.

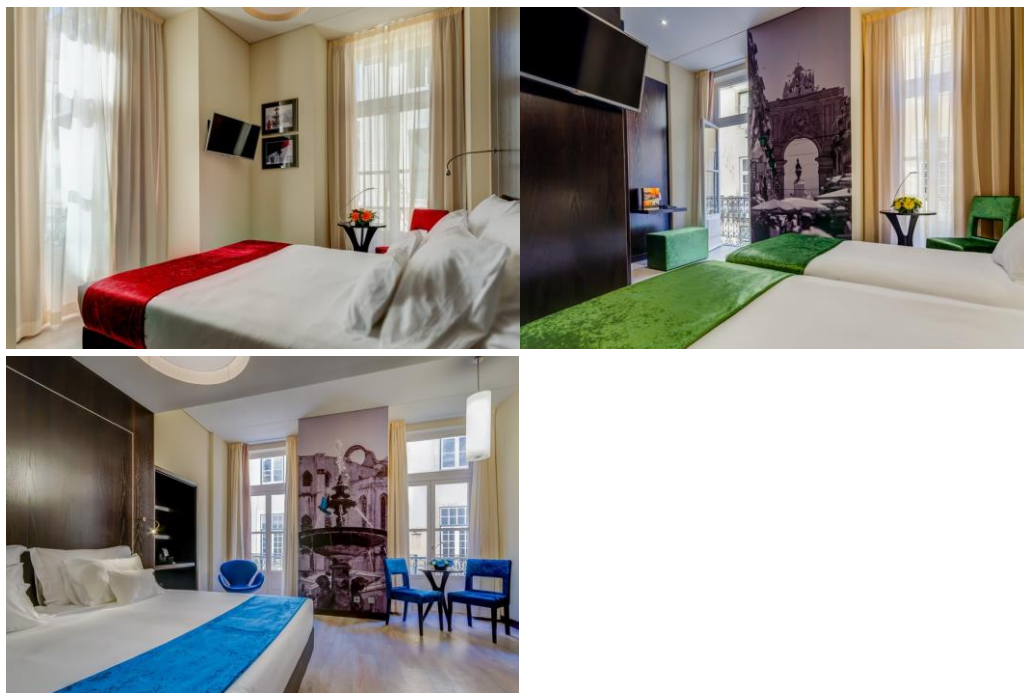
The project began from St Andrew's cross, on which is built the "cage" system to create a three-dimensional solution that connects the outer and inner walls and the horizontal and vertical elements, and thus provides real anti-earthquake protection to **behotelisboa** that meets today's exacting standards.

## THE DÉCOR

The sober and refined interior décor sought to keep alive the spirit of the eighteenth century building by incorporating the original features that could be restored. The chimneys and tiled panels visible in some rooms were combined with contemporary elements in straight lines to create a harmonious whole that transmits comfort and tranquillity.

The image of Lisbon is the common thread that runs through **behotelisboa's** interior décor, fully designed by the owners. The rooms and common areas display large monochrome images that represent iconic places in the city and are punctuated by small dashes of colour. An original way to foreshadow the charms that visitors can discover during their stay.

## THE ROOMS



With areas of between 14m<sup>2</sup> and 29 m<sup>2</sup>, **behotelisboa's** 39 rooms are divided into six categories and the types twin, with single beds of 80x200 cm, and double, with a queen (160x200 cm) or king size (180x200 cm) bed.

On the five floors of accommodation are found 1 Mini Interior View, 5 Standard Interior View, 16 Standard City View, 5 Mansard, 8 Superior and 4 Premium rooms.

All rooms at **behotelisboa** come equipped with wireless internet, air conditioning, windows with soundproof double glazing, LED flat-screen TV with 70 channels via cable, telephone, slippers, cosmetic mirror, hair dryer, amenities “Lisboa” by Lousani, minibar and safe.

#### MINI INTERIOR VIEW ROOM

With an area of 14 m<sup>2</sup>, the Mini Interior View double accommodates two people and is available on the hotel's top floor. It is decorated with green touches and provides a warm and reserved environment.

#### STANDARD INTERIOR VIEW ROOM

With areas between 14m<sup>2</sup> and 19 m<sup>2</sup>, the six twin or double Standard Interior View rooms accommodate two people and are available on all five floors of the hotel. They are decorated with bordeaux or green touches and provide a serene and comfortable environment.

#### STANDARD CITY VIEW ROOM

The 16 Standard City View rooms are spread over the building's first four floors and measure between 15m<sup>2</sup> 19 m<sup>2</sup>. They are double rooms with queen size beds, designed to accommodate two people. They maintain the décor in shades of bordeaux seen in the Standard Interior View rooms, enriched with a view of the city.

#### MANSARD

The Mansard category comprises five double rooms located on the 5<sup>th</sup> floor. The charm of the attic, overlooking the rooftops and bright sky of Lisbon, is heightened by green touches and tiles that depict details of the city. With areas of between 15m<sup>2</sup> and 19m<sup>2</sup>, these rooms come with a queen or king size bed and house two people. In some cases, they can accommodate an extra bed.

#### SUPERIOR ROOM

The eight rooms in the Superior category, double or twin and measuring 19m<sup>2</sup> and city views, transmit Lisbon's vibrant energy in a very comfortable setting. With queen size beds, the double rooms boast bordeaux décor, while the twin rooms follow the standard green.

#### PREMIUM ROOM

**Behotelisboa** also offers four Premium rooms that measure 29m<sup>2</sup> and can accommodate up to three people. Decorated in shades of blue, these rooms located on the building's first four floors offer great comfort, visible in details like the king size bed, the work space with a desk, the lounge area, dressing gowns and the espresso machine.



## BREAKFAST



The comfort and centrality of **bhotelisboa's** accommodation is complimented by a delicious breakfast for an experience rich in traditional flavours. Between 7.30am and 10.30am, the Taberna 132 restaurant, located on the building's ground floor, serves a complete buffet breakfast with the best Portuguese products.

A large selection of breads, cereals, eggs, cold meats, sausages and bacon, cheese, dairy products, jams, dried and fresh fruit, is bolstered by an assortment of the best traditional sweets, with *Conventual* sweets and cakes typical of the different regions of the country.

## HOTEL SERVICES

At **bhotelisboa**, guests can make use of a range of services designed to make their stay more pleasant:

- Free WiFi available throughout the hotel.
- A pillow menu that allows each guest to pick the right pillow to ensure a restful night's sleep. It includes options like feather, viscoelastic or latex pillows.
- A free concierge service, available to assist guests during their stay, with useful information and help to book restaurants, shows, transport, trips, activities and visits, places of worship, among others.
- A free mobile concierge that can be used offline, to help guests configure their own personal stay (it identifies places of interest and routes) and access to the hotel's information.
- 24-hour Room Service, with a menu that includes breakfasts, complete meals, salads and various sandwiches.
- Parking with a special tariff in the Praça da Figueira park.
- Transport to the airport.
- Vehicle hire with or without a driver.
- Clothing services, including laundry, ironing, dry cleaning and sewing arrangements.
- Babysitting.



## DATASHEET



### ADDRESS

Rua dos Correios, no. 136  
1100-168 LISBON

### CONTACTS

Tel. +351 21 342 23 23  
Fax +351 21 342 23 24  
Email [info@behotelisboa.com](mailto:info@behotelisboa.com)  
Site <http://www.behotelisboa.com>

### OPENING DATE

15 Setembro 2015

### OWNERSHIP AND MANAGEMENT

Europombalina – Sociedade Imobiliária, Lda.

### GENERAL DIRECTION

Nara Ferreira  
Nídia Ferreira  
Filipe Ferreira

### No. OF ROOMS

39

### CATEGORIES

Mini Interior View  
Standard Interior View  
Standard City View  
Mansard  
Superior  
Premium

## AMENITIES IN ROOMS

### In all rooms:

Queen size (1,60x2,00m) or  
2 individual beds (2x0,80x2,00m)  
Free WiFi internet  
Safe  
Minibar  
Air conditioning  
LED flat-screen TV with 70 channels via cable  
Windows with soundproof double glazing  
Telephone  
Hair dryer  
Cosmetic mirror  
Slippers  
Amenities "Lisboa" by Lousani

### In the Premium rooms only:

King size bed (1,80x2,00m)  
Dressing gowns  
Machines with tea/coffee capsules  
Working area with desk  
Lounge

## GENERAL AMENITIES

Free WiFi internet  
Pillow menu  
Windows with soundproof double glazing  
Reception open 24H  
Porter  
Wake up call service  
24H concierge service  
Mobile concierge  
Portuguese and international newspapers  
Business centre

## PAID SERVICES

Room service 24H  
Fax/printing and copying  
Laundry  
Dry cleaning  
Ironing  
Sewing  
Babysitting  
Transport to the airport  
Vehicle hire with or with a driver.

## PRESS CONTACTS

Nara Ferreira - [nara.ferreira@behotelisboa.com](mailto:nara.ferreira@behotelisboa.com)  
Nidia Ferreira - [nidia.ferreira@behotelisboa.com](mailto:nidia.ferreira@behotelisboa.com)  
Filipe Ferreira - [filipe.ferreira@behotelisboa.com](mailto:filipe.ferreira@behotelisboa.com)  
Tel. +351 21 342 23 23